

PERÜCKEN · WIGS · PERRUQUES · PELUCAS · PARRUCHE

Belle Madame[®]

HAIR COLLECTION



NEWS 2016

by DENING HAIR 

PERÜCKEN WIGS

VERARBEITUNG+GRÖSSEN
 QUALITY+ SIZES
 QUALITE+TAILLES
 ELABORACIÓN+TAMAÑOS
 LAVORAZIONE+MISURE

SUPER-FRONT SF Neueste Ansatztechnik: großer Filmansatz kombiniert mit feinsten Knüpfung, ermöglicht stirnfreie Frisuren.

Newest hairline technique: large lace-front combined with finest knotting, enables fringeless (forehead-revealing) hairstyles.

La plus nouvelle technique de bordure devant: grande bordure invisible devant liée très finement, permettant coiffures sans frange.

Modernissima técnica de colocación: película grande combinada con un anudado finísimo que permite cortes de pelo que no se van a la frente.

Nuovissima tecnica d'innesto: grande lavorazione a innesto su pellicola combinata con annodamento raffinato, consente pettinature senza frangia.

●●●●● Monofilament + handgeknüpft
 Monofilament + hand-tied
 Monofilament + implanté main
 Monofilamento + anudadas a mano
 Monofilamento + annodata a mano

●●●●○ Monofilament + Tresse
 Monofilament + wefts
 Monofilament + bandes
 Monofilamento + trama
 Monofilamento + fascette

●●●○○ Handgeknüpft auf Mono-Tüll
 Hand-tied on Mono-Net
 Implanté main sur Mono-Tulle
 Anudadas a mano en tul mono
 Annodata a mano su tulle mono

●●○○○ Teil-Monofilament
 Mono-part
 Part de Monofilament
 Parte de monofilamentos
 Monofilamento parziale

●○○○○ Tressenmontur
 Wefted cap
 Bonnet avec bandes
 Montaje entramado
 Calotta a fascette

◀ Film-Ansatz im Stirnbereich
 Lace-Front
 Bordure invisible devant
 Película en la zona de la frente
 Lavorazione a innesto su pellicola nella zona frontale

XXS 48-51 cm
 XS 50-52 cm
 S 52-54 cm
 M 54-56 cm
 L 56-58 cm
 XL 58-60 cm



SYNTHETIKPERÜCKEN
 SYNTHETIC WIGS

SHORT STYLES 4

EBBA SF 4-5
 SENTA MONO SF 6-7
 SOFIA SF 8-9

BOB STYLES 10

AMANDA MONO SF 10-11

LONG HAIR STYLES 12

LARISSA SF 12-13
 ANGELINA MONO SF 14-15

ECHTHAARPERÜCKEN
 HUMAN HAIR WIGS

SHORT STYLES 18

ZITA RH 18-19

LONG HAIR STYLES 20

GISELLE RH 20-21

HAARTEILE
 HAIR PIECES

SYNTHETIK | SYNTHETIC 22

DIAMOND SF 22
 DIAMOND LONG SF 22

ECHTHAAR | HUMAN HAIR 23

BARCELONA RH 23
 MALAGA RH 23



EBBA SF

●●○○○ ◀ S

SUPER-FRONT

Mono-Wirbel / Mono-Crown

BROWN COLOURS

2, 4/6-4, Mocca (6/10/30), Chocolate (8/12/30),
Chocolate-Mix (8/27-4)

BLOND COLOURS

Chocolate/Cream-Root (10/27/20R+Root10),
Vanilla-Root (14/26+Root14),
Honey-Toast (14/20/25R-12),
Sandy-Blond-Root (20/25R-14+Root14),
Champagne-Root (22H/22+Root12),
Swedish-Blond-Root (25R/22H+Root16)

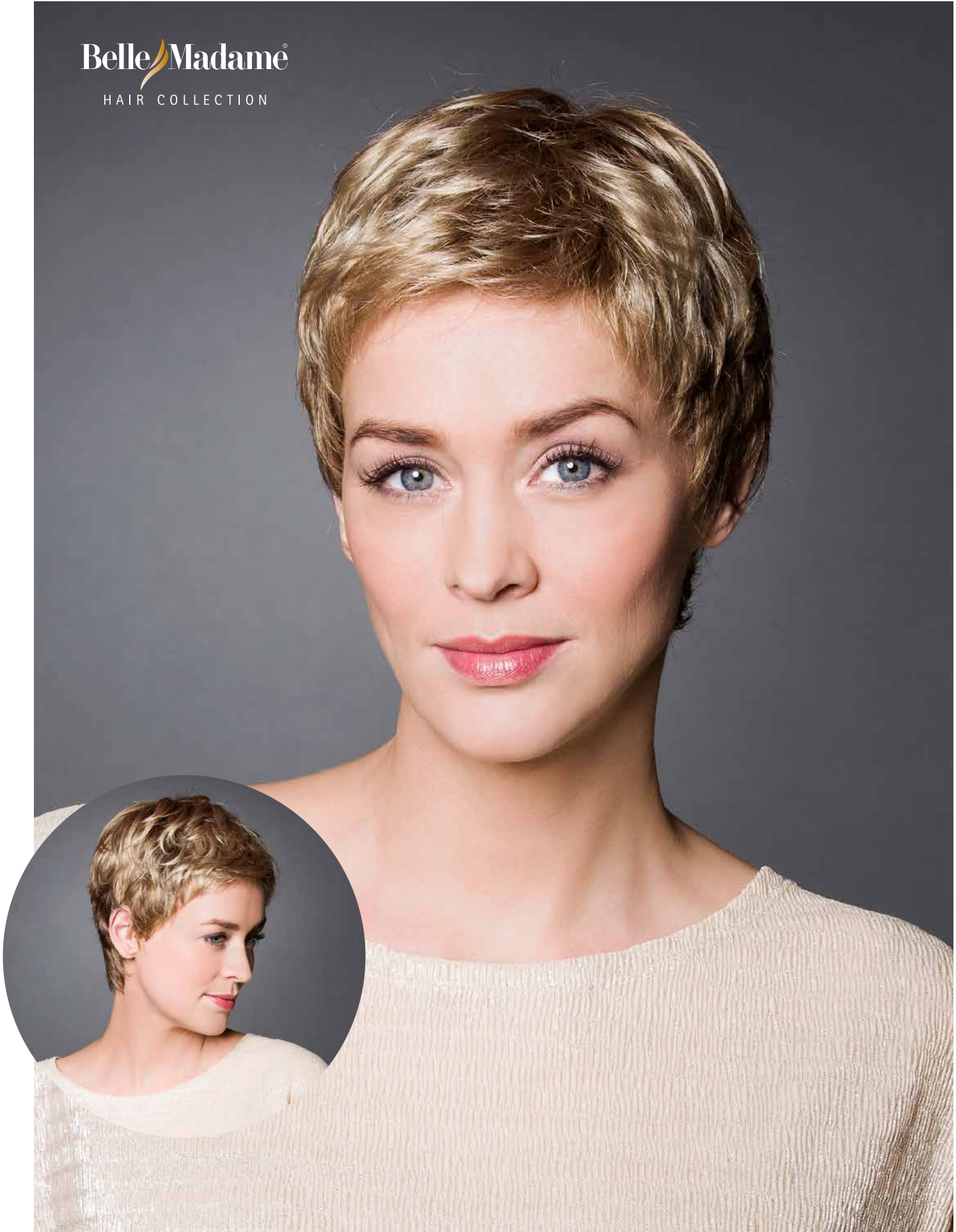
RED COLOURS

Cherry-Coke (2/4/133),
Terracotta-Gold (8/27R-8),
Terracotta-Root (33/130+Root2),
Red-Power-Mix (135/130/4)

GREY COLOURS

38/39, Salt&Pepper (44/51/60),
45-36-39, 56/53-39, 60-56-51, 60/101,
Ice-Blond-Root (101/22H+Root10),
101/14-14

EBBA SF Ice-Blond-Root



EBBA SF *Sandy-Blond-Root*

SHORT STYLES



SENTA MONO SF

●●●●○ ◀ M

SUPER-FRONT

BROWN COLOURS

2, 4/6-4, Mocca (6/10/30),
Cold-Chocolate (5/8/14), Chocolate (8/12/30),
Chocolate-Mix-Root (8/10/14+Root4)

BLOND COLOURS

Chocolate/Cream-Root (10/27/20R+Root10),
Honey-Mix (14/20/25R),
Vanilla-Root (14/26+Root14),
Sandy-Blond-Root (20/25R-14+Root14),
Champagne-Mix-Root (22H/20R+Root8),
Swedish-Blond-Mix (25R/22H-20+Root16)

RED COLOURS

Cherry-Coke (2/4/133),
Cherry-Root (33/130+Root4),
Dark-Copper-Root (8/30/27+Root4)

GREY COLOURS

Salt&Pepper-X (44/51/60+F60),
45-36-39, 56/53-39, 60/101,
Snow-Blond-Root (101/16/60+Root10)

BelleMadame[®]

HAIR COLLECTION

SENTA MONO SF *Cherry-Root*



SENTA MONO SF *Sandy-Blond-Root*

SHORT STYLES



SOFIA SF Champagne-Root



SOFIA SF Cold-Chocolate

SOFIA

SOFIA SF

●●○○○ < S/M

SUPER-FRONT

Mono-Wirbel / Mono-Crown

BROWN COLOURS

2, 4/6-4, Mocca (6/10/30),
Cold-Chocolate (5/8/14),
Chocolate-Mix-Root (8/10/14+Root4)

BLOND COLOURS

Chocolate/Cream-Root (10/27/20R+Root10),
Vanilla-Root (14/26+Root14),
Honey-Toast (14/20/25R-12),
Sandy-Blond-Root (20/25R-14+Root14),
Champagne-Root (22H/22+Root12)

RED COLOURS

Cherry-Coke (2/4/133),
Dark-Red-Mix (30/6/27-6),
Red-Power-Mix (135/130/4)

GREY COLOURS

Salt&Pepper (44/51/60), 45-36-39,
56/53-39, 60-56-51, 60-W, 101/14-14,
Snow-Blond-Root (101/16/60+Root10)

SOFIA SF Cold-Chocolate

360°





SOFIA SF *Salt&Pepper*



AMANDA MONO SF

●●●●○ ◀ M

SUPER-FRONT

BROWN COLOURS

2, 4/6-4, Cold-Chocolate (5/8/14),
Chocolate (8/12/30),
Chocolate-Mix-Root (8/10/14+Root4)

BLOND COLOURS

Butter-Scotch (14/24R/20R),
Vanilla-Root (14/26+Root14),
Caramel-Root (20/27/22H+Root8),
Danish-Blond-Root (20R/22H+Root14),
Danish-Blond (20R/22H),
Champagne-Root (22H/22+Root12),
Swedish-Blond-Mix (25R/22H-20+Root16)

RED COLOURS

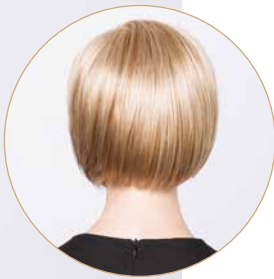
Cherry-Coke (2/4/133),
Terracotta-Gold (8/27R-8),
Dark-Copper-Root (8/30/27+Root4)

GREY COLOURS

Salt&Pepper-X (44/51/60+F60), 56/53-39,
60-56-51, 60/101

360°

AMANDA MONO SF
Danish-Blond

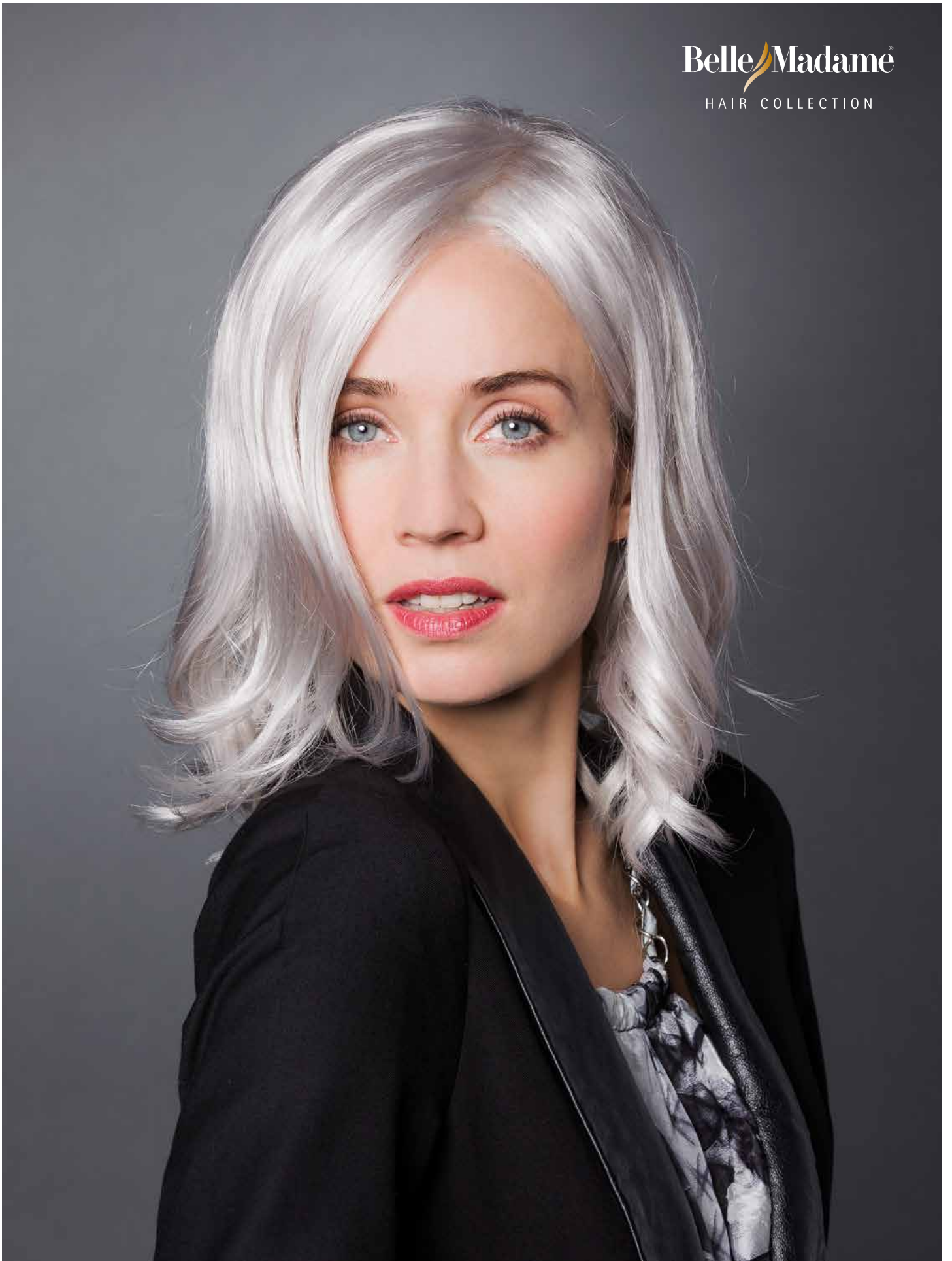




AMANDA

CREATIVE STYLING

AMANDA MONO SF *Cherry-Coke*



LARISSA SF 60/101

LARISSA SF

●●○○○ < M

SUPER-FRONT

Mono-Scheitel / Mono-Parting

BROWN COLOURS

2, 4/6-4, Mocca (6/10/30),
Cold-Chocolate (5/8/14), Chocolate (8/12/30),
Chocolate-Mix-Root (8/10/14+Root4)

BLOND COLOURS

Butter-Scotch (14/24R/20R),
Caramel-Root (20/27/22H+Root8),
Danish-Blond-Root (20R/22H+Root14),
Champagne-Root (22H/22+Root12),
Swedish-Blond-Root (25R/22H+Root16)

RED COLOURS

Cherry-Root (33/130+Root4),
Dark-Copper-Mix (8/29A)

GREY COLOURS

Salt&Pepper-X (44/51/60+F60), 60/101

360°

LARISSA SF
Dark-Copper-Mix



LARISSA



ANGELINA

CREATIVE STYLING

ANGELINA MONO SF Honey-Mix

ANGELINA MONO SF



SUPER-FRONT

BROWN COLOURS

2, 4/6-4, Mocca (6/10/30),
Chocolate (8/12/30), Chocolate-Mix (8/10/27/20)

BLOND COLOURS

Honey-Mix (14/20/25R),
Vanilla-Root (14/26+Root14),
Caramel-Root (20/27/22H+Root8),
Danish-Blond-Root (20R/22H+Root14),
Champagne-Root (22H/22+Root12),
Swedish-Blond-Root (25R/22H+Root16)

RED COLOURS

Cherry-Coke (2/4/133),
Cherry-Root (33/130+Root4),
Dark-Copper-Mix (8/29A)

GREY COLOURS

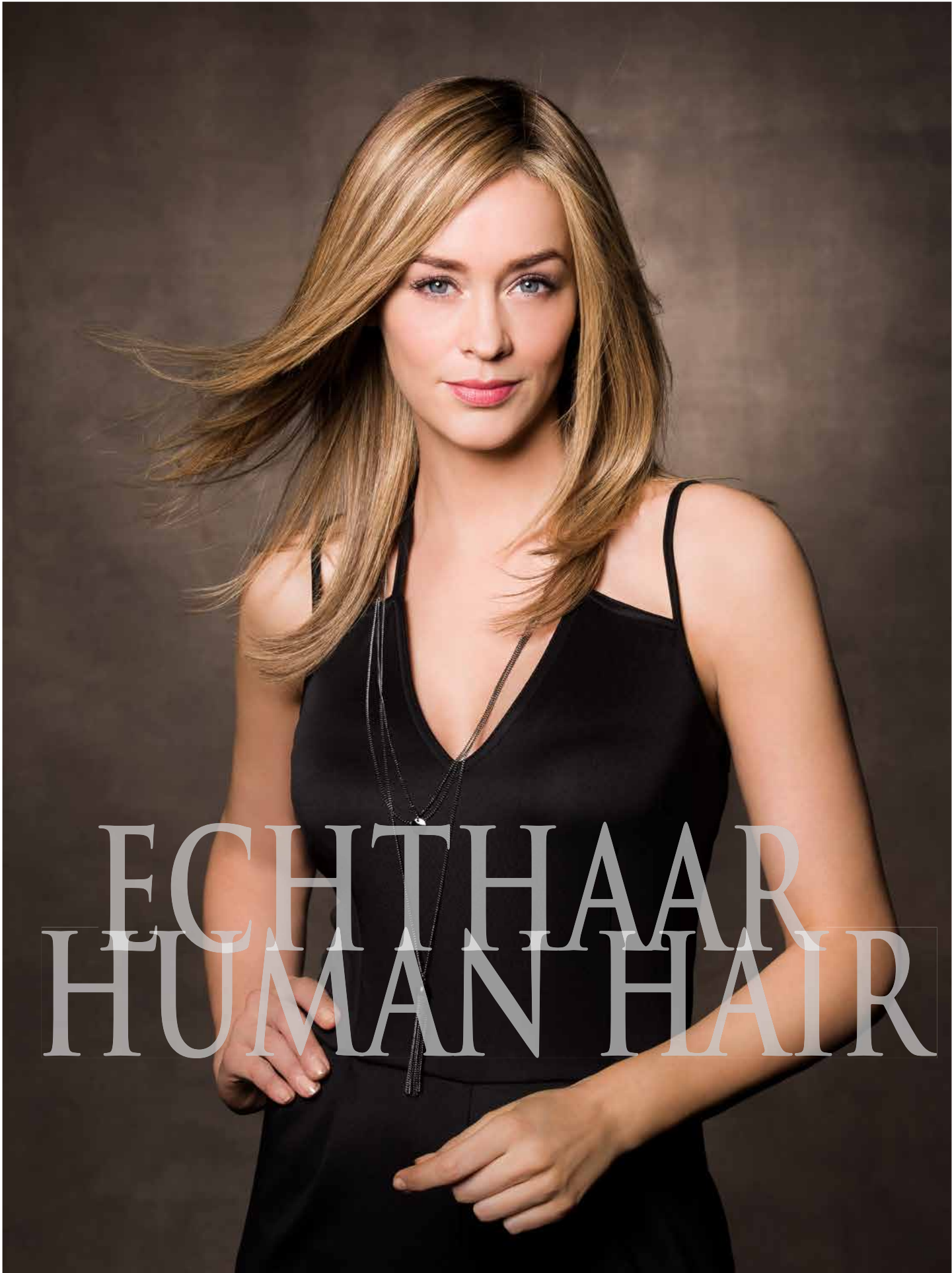
Salt&Pepper-X (44/51/60+F60),
101/14-14



ANGELINA MONO SF *Chocolate-Mix*

Belle  **Madame**[®]
Natural Hair Line

by **DENING HAIR** 





ZITA

ZITA RH Cherry-Root

ZITA RH

●●●●○ < S (52 - 54 cm)

SUPER-FRONT

HAARLÄNGE / HAIR LENGTH

7,5 - 15 cm

HAARDICHTE / HAIR VOLUME

115 %

leicht-mittel / light-medium

BROWN COLOURS

2, 4, 4/8, 6/10-6, Chocolate (8/12/30)

BLOND COLOURS

Caramel-Root (12/27/22H+Root10),

Honey-Toast (12/15/25-12),

Vanilla-Mix-Root (20/12A/23A+Root10/12A),

Danish-Blond-Root (20R/19+Root12),

Champagne-Root (20R/23+Root10),

Swedish-Blond-Root (23A/26+Root16)

RED COLOURS

Terracotta-Gold (30/8/27R-8),

Cherry-Root (33/130+Root4)

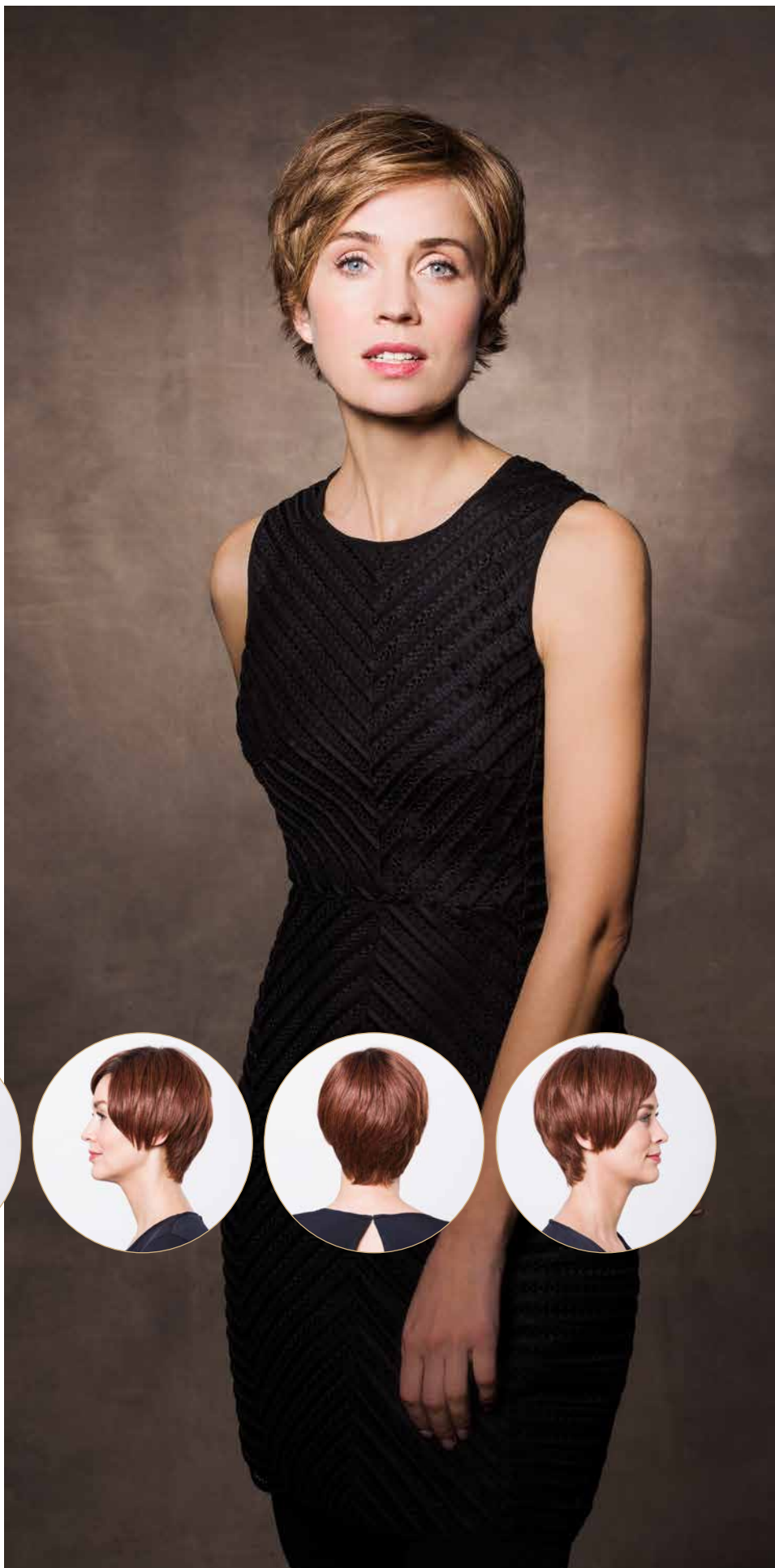
360°

ZITA RH
Cherry-Root



CREATIVE STYLING

ZITA RH Caramel-Root





GISELLE RH

●●●●○ ◀ S/M (53 - 55 cm) SUPER-FRONT

HAARLÄNGE / HAIR LENGTH 30 - 35 cm

HAARDICHTE / HAIR VOLUME 115 - 130 %

Leicht-mittel bis mittel / light-medium to medium

BROWN COLOURS

2, 4, 4/8, 6/10-6, Chocolate (8/12/30)

BLOND COLOURS

Caramel-Root (12/27/22H+Root10),

Honey-Mix (12A/25R/28),

Vanilla-Mix-Root (20/12A/23A+Root10/12A),

Danish-Blond-Root (20R/19+Root12),

Champagne-Root (20R/23+Root10),

Swedish-Blond-Root (23A/26+Root16)

RED COLOURS

Terracotta-Gold (30/8/27R-8),

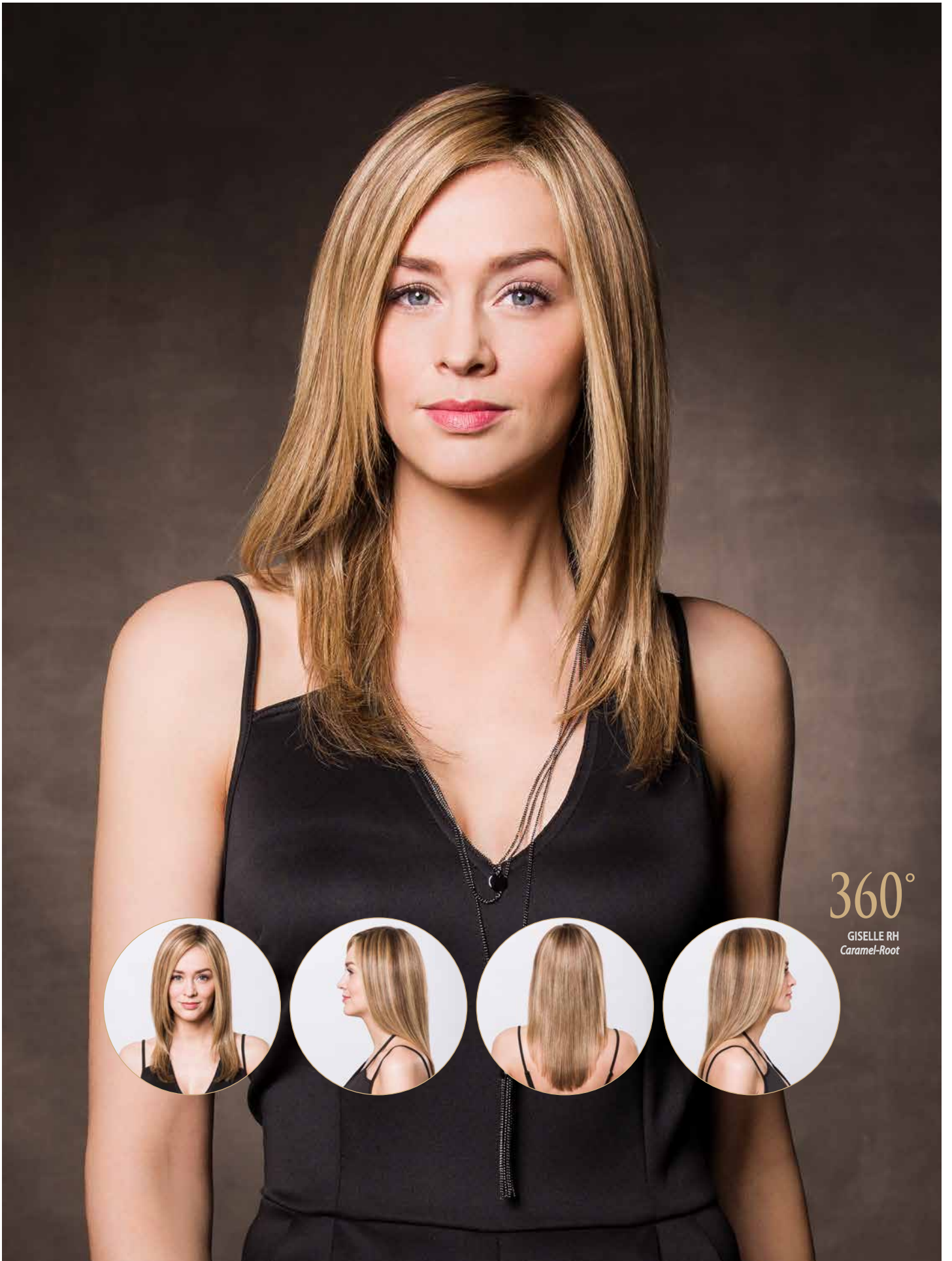
Cherry-Root (33/130+Root4)

OMBRE COLOURS

Chestnut/Blond-Ombre (30/31-28)

CREATIVE STYLING

GISELLE RH Honey-Mix



360°

GISELLE RH
Caramel-Root





DIAMOND SF

SUPER-FRONT

Größe / Size : 17,5 x 17 cm

Haarlänge / Hair Length : 7,5 - 15 cm

- Mono-Haarteil mit 4 Clipsen, SUPER-FRONT und handgeknüpftem Hinterkopf.
- Mono hair piece with 4 clips, SUPER-FRONT and hand-tied back.
- Postiche en Monofilament avec 4 clips, SUPER-FRONT et implanté main occiput.
- Monofilamento postizo con 4 clips, SUPER-FRONT y anudado a mano en la parte posterior de la cabeza.
- Posticcio mono con 4 clip, SUPER-FRONT e un annodata a mano occipite.

BROWN COLOURS

2, 4/6, Mocca (6/10/30),
Cold-Chocolate (5/8/14), Chocolate (8/12/30),
Chocolate-Mix-Root (8/10/14+Root4)

BLOND COLOURS

10/12, Honey-Mix (14/20/25R),
Vanilla-Root (14/26+Root14),
Caramel-Root (20/27/22H+Root8),
Sandy-Blond-Root (20/25R-14+Root14),
Champagne-Root (22H/22+Root12),
Swedish-Blond-Mix (25R/22H-20+Root16)

RED COLOURS

Cherry-Root (33/130+Root4),
Dark-Copper-Root (8/30/27+Root4)

GREY COLOURS

39-38, 45-36, Salt&Pepper (44/51/60), 56/53,
60-56, 60, 101/14



DIAMOND LONG SF

SUPER-FRONT

Größe / Size : 23 x 23 cm

Haarlänge / Hair Length : 18 - 23 cm

- Halbperücke: Monofilament + handgeknüpft mit 4 Clipsen und SUPER-FRONT.
- Half-wig: Monofilament + hand-tied with 4 clips and SUPER-FRONT.
- Demi-Perruque: Monofilament + implanté main avec 4 clips et SUPER-FRONT.
- Media-Peluca: Monofilamento + anudada a mano con 4 clips y SUPER-FRONT.
- Mezza-Parrucche: Monofilamento + annodata a mano con 4 clip e SUPER-FRONT.

BROWN COLOURS

2, 4/6, Mocca (6/10/30),
Cold-Chocolate (5/8/14), Chocolate (8/12/30),
Chocolate-Mix-Root (8/10/14+Root4)

BLOND COLOURS

Honey-Mix (14/20/25R),
Vanilla-Root (14/26+Root14),
Caramel-Root (20/27/22H+Root8),
Sandy-Blond-Root (20/25R-14+Root14),
Champagne-Root (22H/22+Root12),
Swedish-Blond-Mix (25R/22H-20+Root16)

RED COLOURS

Cherry-Coke (2/4/133),
Dark-Red-Mix (30/6/27-6),
Cherry-Root (33/130+Root4),
Dark-Copper-Root (8/30/27+Root4)

GREY COLOURS

45-36, Salt&Pepper-X (44/51/60+F60), 56/53,
60-56-51, 60/101, 101/14



DIAMOND LONG SF



BARCELONA RH



MALAGA RH



BARCELONA RH

SUPER-FRONT

- Halbperücke: Monofilament + handgeknüpft mit 4 Clipsen und SUPER-FRONT.
- Half-wig: Monofilament + hand-tied with 4 clips and SUPER-FRONT.
- Demi-Perruque: Monofilament + implanté main avec 4 clips et SUPER-FRONT.
- Media-Peluca: Monofilamento + anudada a mano con 4 clips y SUPER-FRONT.
- Mezza-Parrucche: Monofilamento + annodata a mano con 4 clip e SUPER-FRONT.

Größe / Size : 22 x 22 cm

Haarlänge / Hair Length : 18 - 23 cm

BROWN COLOURS

2, 4, 4/8, 6/10-6, Chocolate (8/12/30),
Chocolate-Mix (8/10/27/20)

BLOND COLOURS

10/12, Honey-Toast (12/15/25-12),
Caramel-Root (12/27/22H+Root10),
Vanilla-Mix-Root (20/12A/23A+Root10/12A),
Danish-Blond-Root (20R/19+Root12),
Champagne-Root (20R/23+Root10),
Swedish-Blond-Root (23A/26+Root16)

RED COLOURS

Terracotta-Gold (30/8/27R-8), 33/30



MALAGA RH

- Mono-Haarteil mit 4 Clipsen, Film-Ansatz im Stirnbereich, Mono-Scheitel und Tressen von Tempel-zu-Tempel.
- Mono hair piece with 4 clips, Lace-Front, Mono-Parting and wefts from temple-to-temple.
- Postiche en Monofilament avec 4 clips, Bordure invisible devant, mono-sommet et des bandes de tempe à tempe.
- Monofilamento postizo con 4 clips, Película invisible en la zona de la frente, mono-partidura y tejido de sien a sien.
- Posticcio mono con 4 clip, Lavorazione a innesto su pellicola nella zona frontale, mono-riga e fasce da tempia a tempia.

Größe / Size : 17 x 16 cm

Haarlänge / Hair Length : 35 cm

BROWN COLOURS

2, 4, 4/8, 6/10-6, Chocolate (8/12/30),
Chocolate-Mix (8/10/27/20)

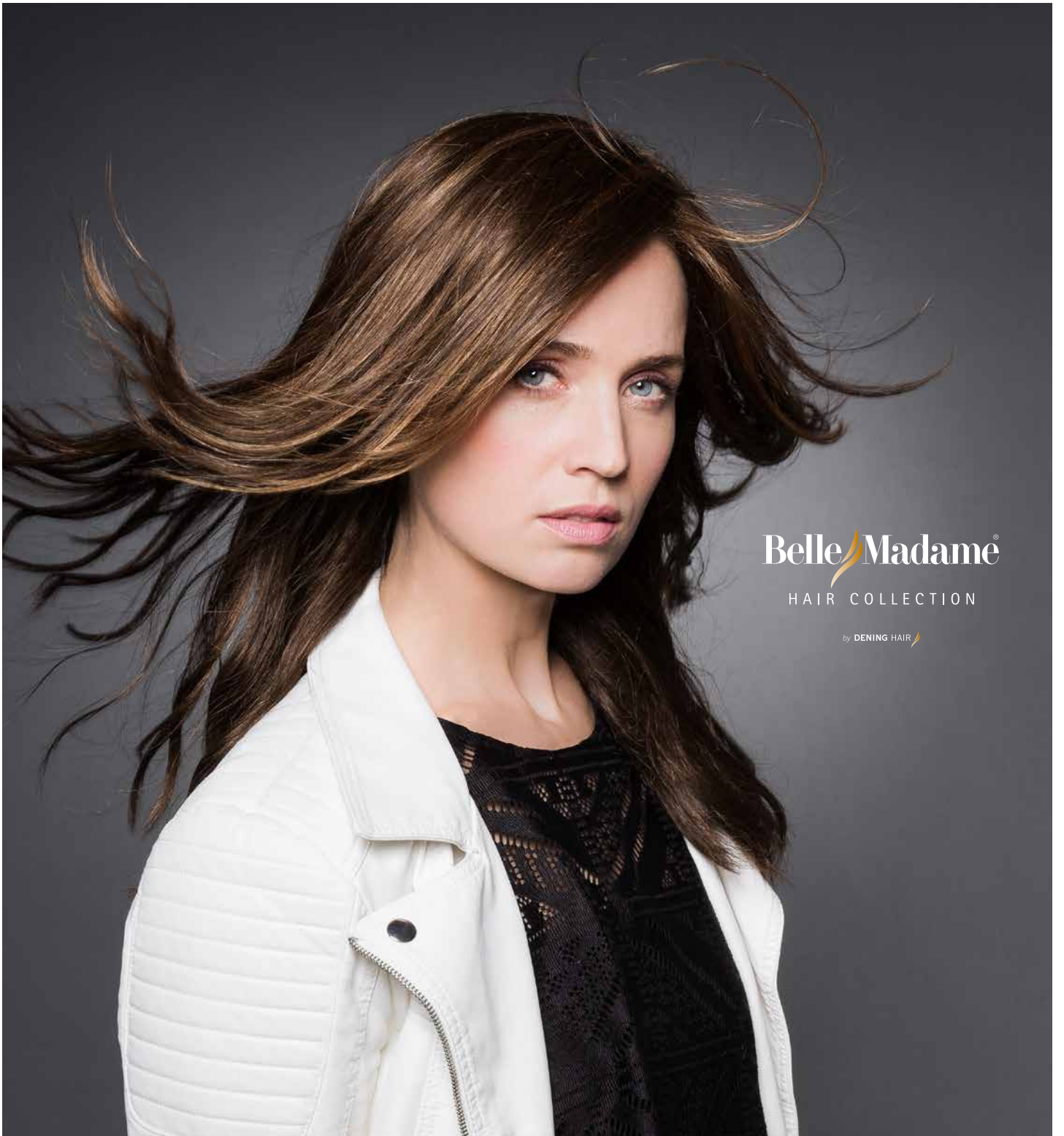
BLOND COLOURS

10/12, Honey-Toast (12/15/25-12),
Caramel-Root (12/27/22H+Root10),
Vanilla-Mix-Root (20/12A/23A+Root10/12A),
Danish-Blond-Root (20R/19+Root12),
Champagne-Root (20R/23+Root10),
Swedish-Blond-Root (23A/26+Root16)

RED COLOURS

Terracotta-Gold (30/8/27R-8), 33/30





BelleMadame®

HAIR COLLECTION

by DENING HAIR